

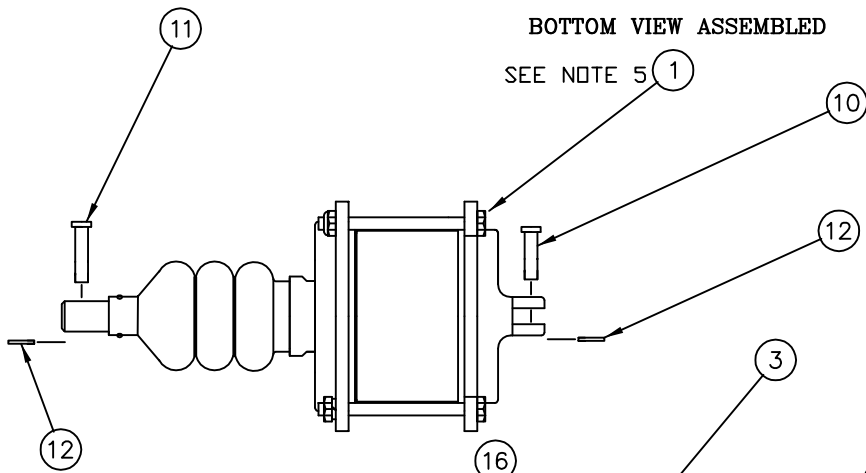
**EMC565949 Air Cylinder
Kit No. EMC903000202**

BILL OF MATERIALS

ITEM	PART No.	PART NAME	MAT'L	QTY
1	565882	TIE ROD BOLT	STL/ZINC PLATE	3
2	565943	CYLINDER CUP	ALUM.	1
3	565726	O-RING	NITRILE	1
4	565907	TOP CYLINDER	ALUM	1
(K) 5	522001234	O-RING	NITRILE	1
6	565718	WIPER SEAL	URETHANE	1
7	565877	PISTON ROD	SST	1
8	565879	BELLOWS	NEOPRENE	1
9	565880	CLAMP	PLASTIC	2
10	565875	CLEVIS PIN, BOTTOM	SST	1
11	565876	CLEVIS PIN, TOP	SST	1
12	565874	COTTER PIN	STEEL	2
(K) 13	522001235	O-RING	NITRILE	1
14	565898	PISTON	ALUM	1
15	565948	FUSIBLE PLUG	BRASS	1
16	236104400	LOCK-NUT	STL/ZINC	3
17	566113	INLET PLUG	PLASTIC	1
(B) 19	453403	ZIP-LOC BAG	PLASTIC	1
(C) 20	577052	CONICAL SPRING	SST	1
(K) 21	825033210	ELBOW 1/8"NPTxPUSH-IN	---	1

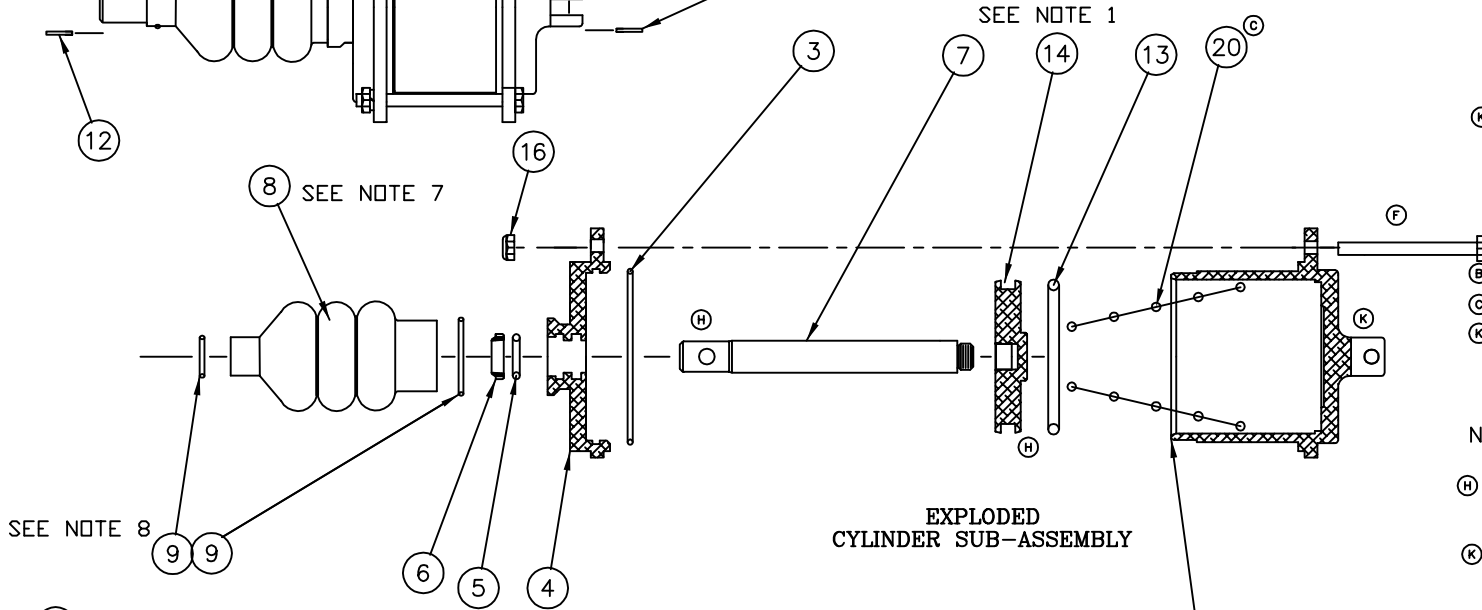
BOTTOM VIEW ASSEMBLED

SEE NOTE 5



SEE NOTE 1

**EXPLODED
CYLINDER SUB-ASSEMBLY**



SEE NOTE 8

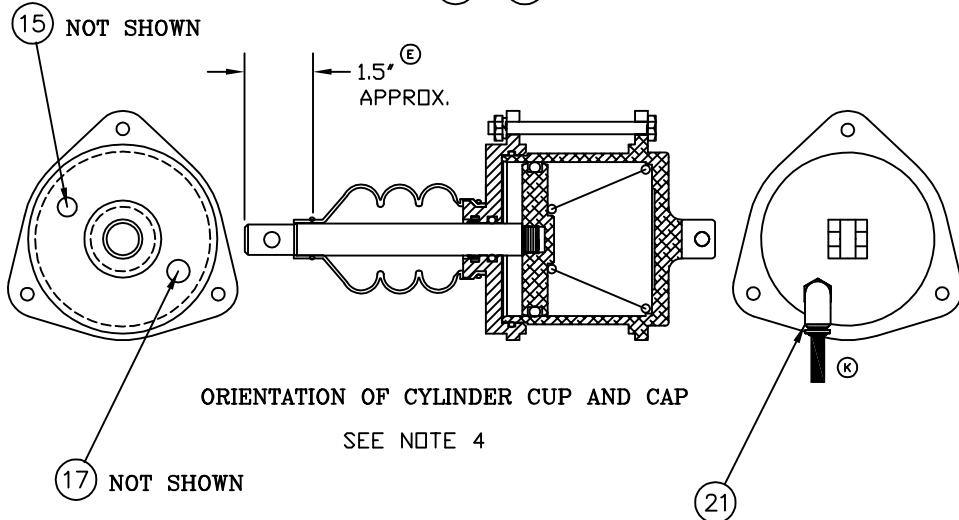
SEE NOTE 2

NOTES:

1. APPLY LOCTITE RC/680 TO ROD THREADS
- (H) 2. APPLY THIN LAYER OF TEFLON GREASE TO WALLS OF CYLINDER CUP BEING SURE TO COAT ALL SURFACES OF BORE.
- (K) 3. AT INSTALLATION, COAT ALL O-RINGS WITH PARKER O-RING LUBE.
4. CAP SHOULD BE ORIENTED AS SHOWN WITH PLASTIC PLUG IN THE 4 O'CLOCK POSITION WITH CUP FORK TO BE VERTICAL AND PARALLEL WITH HOLE IN THE ROD
- (L)(J)(C) 5. TIGHTEN NUTS BETWEEN 40-43 IN.-LBS.
6. TEST PER TP-145
7. BELLOWS TO BE POSITIONED SO THAT SLIT IS ON THE BOTTOM WHEN INSTALLED WITH SMALL END APPROX. 1.5" FROM SHAFT END. (SEE FIGURE)
8. PULL TIES TIGHT AND TRIM OFF EXCESS
- (G) 9. AFTER TEST, BAG ITEMS 10,11 AND 12 AND TAPE ZIP-LOC BAG TO CYLINDER BODY

ORIENTATION OF CYLINDER CUP AND CAP

SEE NOTE 4



Tank Truck Service & Sales, Inc Warren, Michigan
800-482-2678 www.tanktruckservice.com